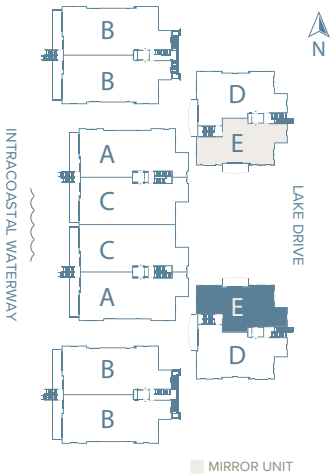
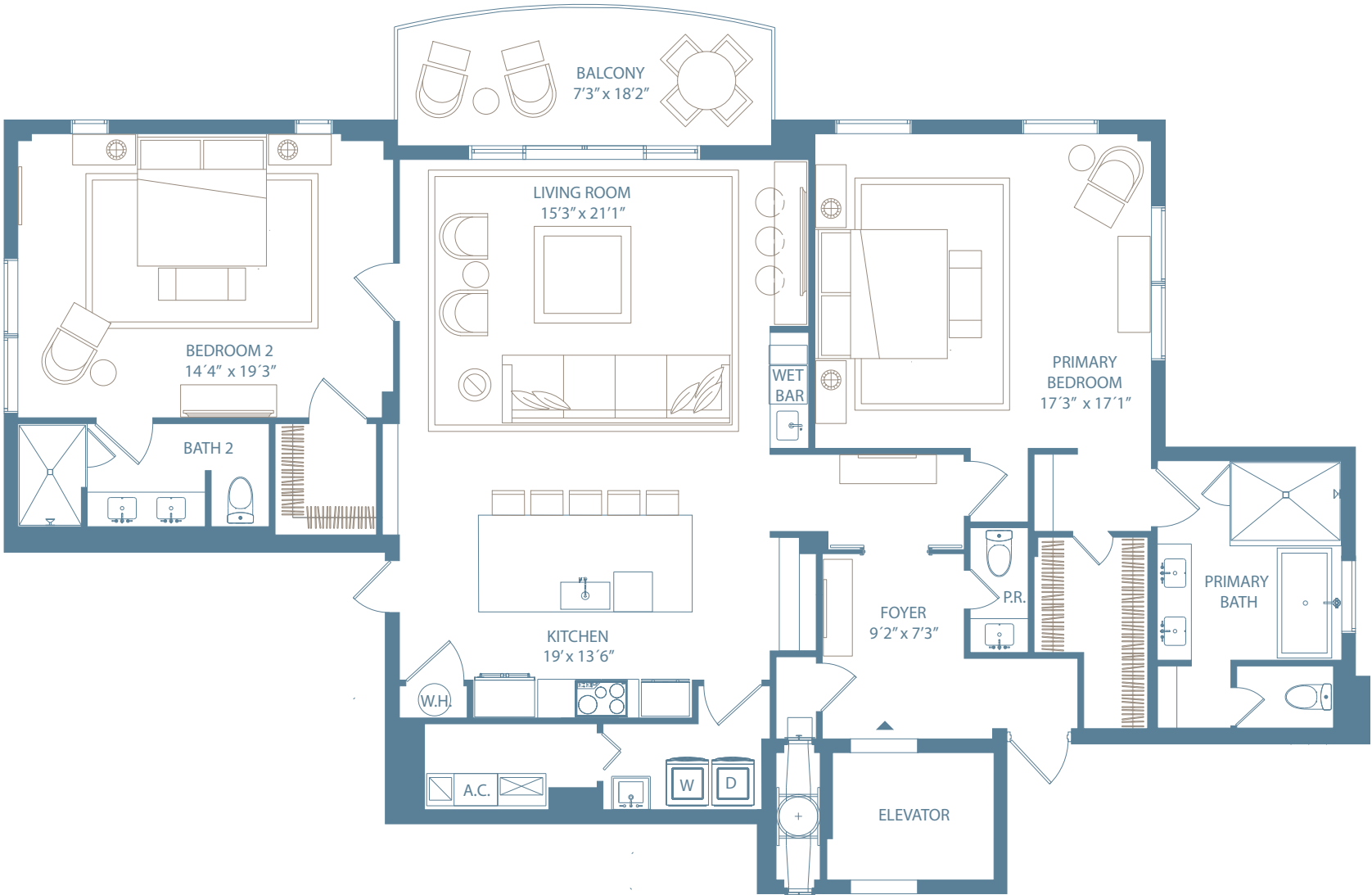


RESIDENCE E

2 Bedrooms | 2.5 Bathrooms

Interior 1,823 sf | Exterior 135 sf | Total 1,958 sf



DEVELOPED BY: JOHNSTON GROUP CAPITAL MANAGEMENT EXCLUSIVE SALES & MARKETING: COMPASS DEVELOPMENT MARKETING GROUP

ORAL REPRESENTATIONS CANNOT BE RELIED UPON AS CORRECTLY STATING REPRESENTATIONS OF THE DEVELOPER. FOR CORRECT REPRESENTATIONS, MAKE REFERENCE TO THIS BROCHURE AND TO THE DOCUMENTS REQUIRED BY SECTION 718.503, FLORIDA STATUTES, TO BE FURNISHED BY A DEVELOPER TO A BUYER OR LESSEE.

There are various methods for measuring the square footages of units and depending on the method used, the resulting unit square footages may vary from the unit square footage as stated in the prospectus and the declaration for the Condominium. Stated unit square footages are measured to the exterior boundaries of the exterior walls and the centerline of interior demising walls, and in fact vary from (and are greater than) the square footages determined by using the description and definition of the "Unit" set forth in the prospectus and declaration (which generally only includes the interior airspace between the unit perimeter walls and excludes interior structural components). All depictions and descriptions of units, views, appliances, finishes, fittings, features, materials, colors, brands and/or specifications of equal or greater are proposed and are subject to change and/or substitution by developer in its sole discretion and without prior notice. The marina, piers and boat slips are not part of the Condominium. For complete legal disclaimers, privacy policy and terms of use, visit our website at www.HAVNResidences.com. © PBS Condominium, LLC. All Rights Reserved.

